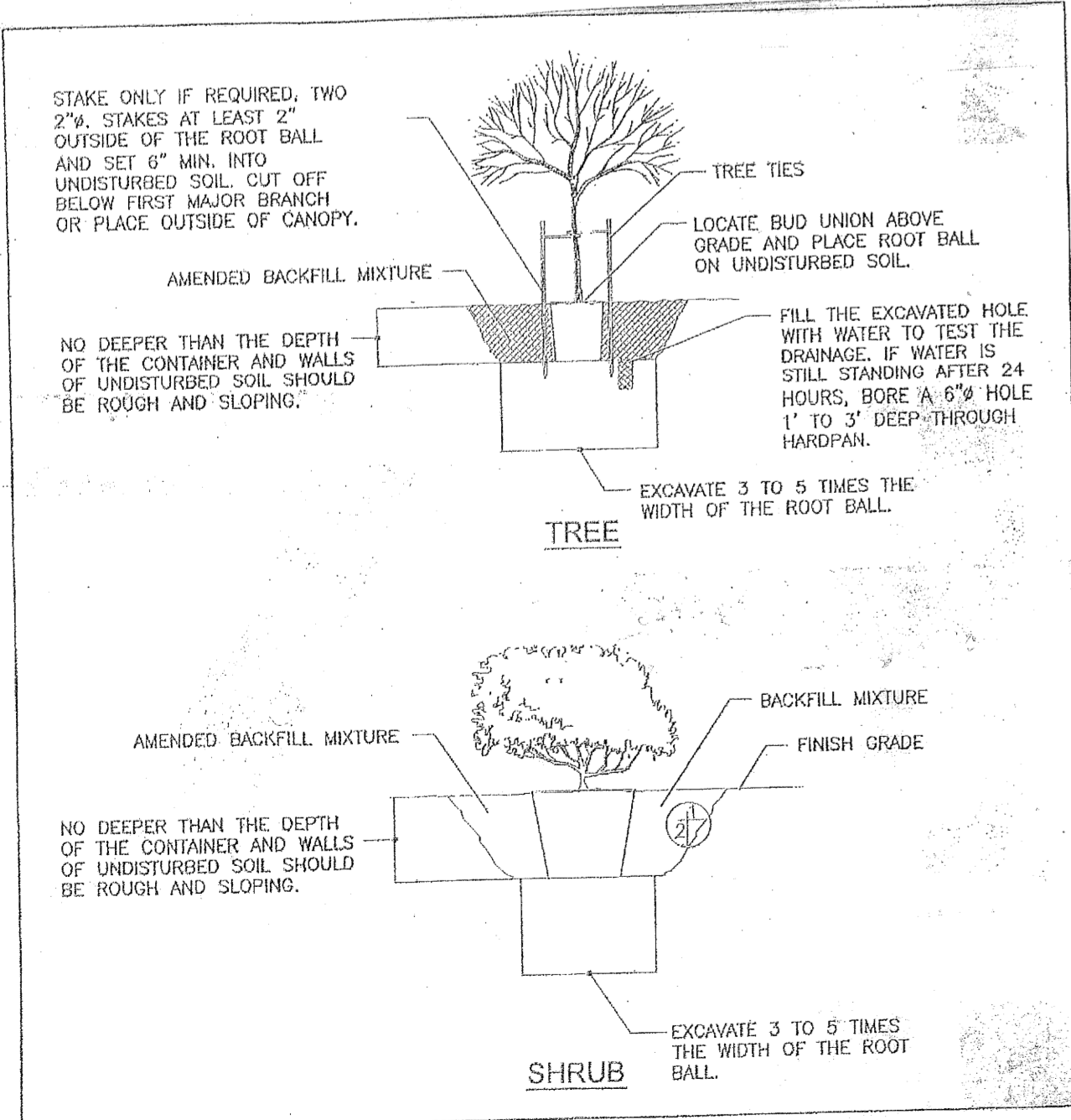


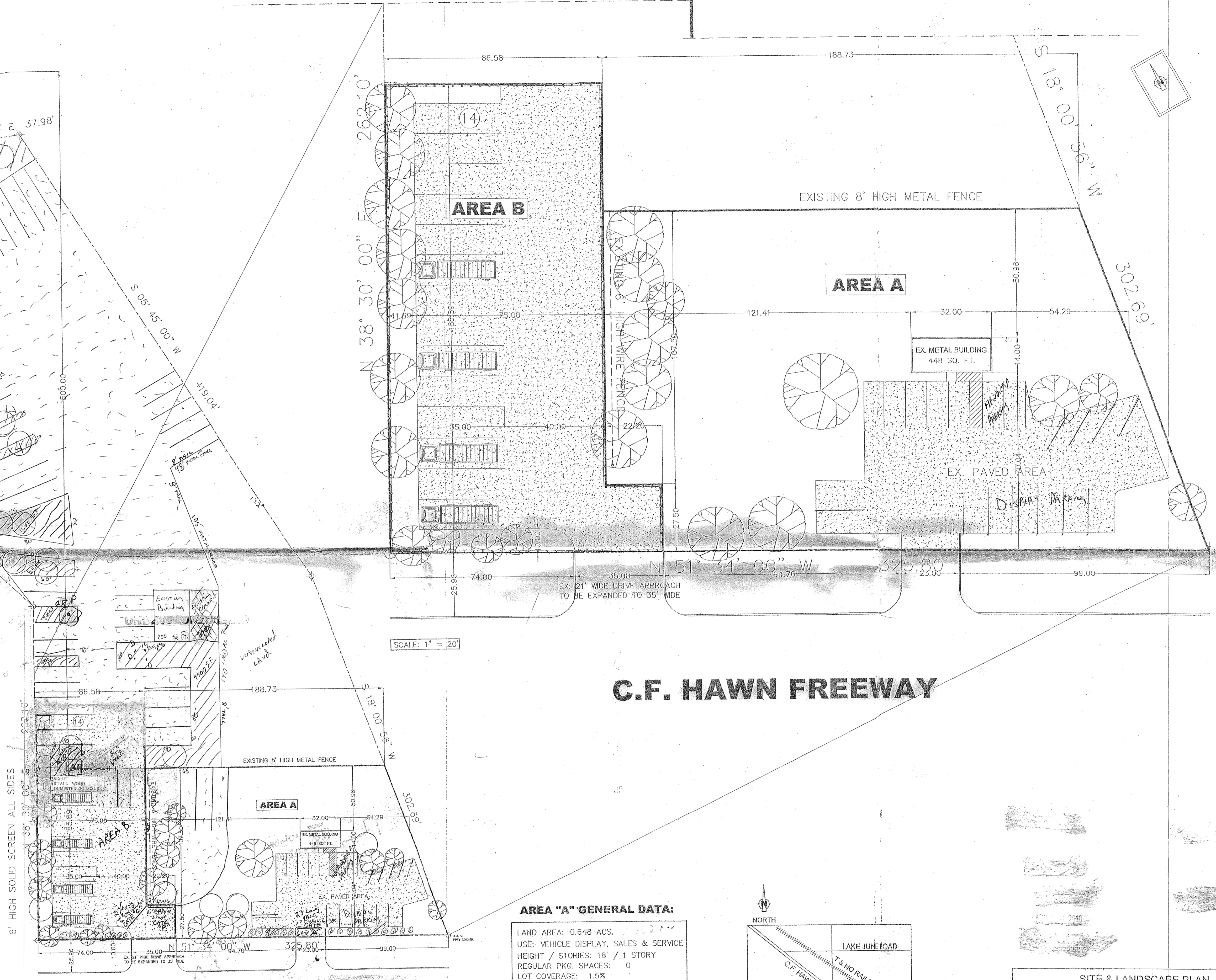
T & NO RAILROAD 100' R.O.W.
 S 59° 47' 04" E 37.98'

LANDSCAPE LEGEND

- (14) CELTIS DIAMBIGUATION (HACKBERRY)
- (16) CALIPER OAK (OAK)
- (10) CARYA ILLINOENSIS (PECAN)
- (2) HEVEA BRASILENSIS (RUBBER TREE)
- (1) DIOSPYROS EBENACEAE (PERSIMMON)
- (5) CUPRESSACEAE CONIFER (CYPRESS)
- (1) LAGERSTROEMIA GENUS (CRATE MYRTLE)
- (2) MAGNOLIA GRANDIFLORA (SOUTHERN MAGNOLIA)
- (1) QUERCUS VIRGINIANA (LIVE OAK)
- (S) HIGH SHRUB @36" C-C
- GREEN AREA



PLANTING DETAIL
 NOT TO SCALE



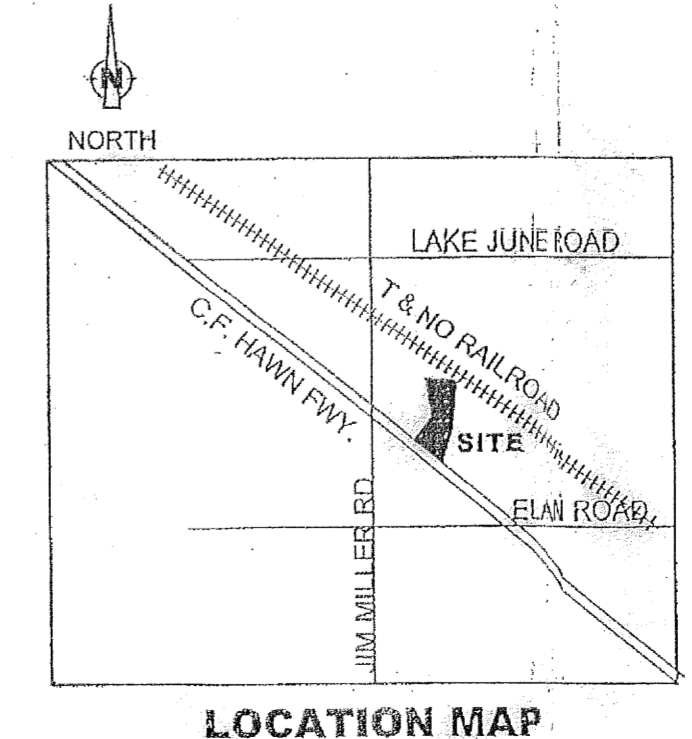
C.F. HAWN FREEWAY

AREA "A" GENERAL DATA:

LAND AREA: 0.648 ACS.
 USE: VEHICLE DISPLAY, SALES & SERVICE
 HEIGHT / STORIES: 18' / 1 STORY
 REGULAR PKG. SPACES: 0
 LOT COVERAGE: 1.5%

AREA "B" GENERAL DATA:

LAND AREA: 0.383 ACS. 2.82 ACRES
 LAND USE: COMMERCIAL MOTOR VEHICLE
 COMMERCIAL PKG. SPACES: 14
 55



SITE & LANDSCAPE PLAN			
7216 C.F. HAWN FREEWAY			
Z 090-142 (RB)			
DEPARTMENT OF CURRENT PLANNING			
CITY OF DALLAS			
DESIGN BY:	DRAWN BY:	DATE:	SCALE:
ARANDA	ARANDA	SEPTEMBER 13, 2010	1" = 40'